

# Welcome to Curriculum Night!

Fifth Grade A Team  
Yarbrough Elementary School  
2020-2021



# During the presentation...

- Don't forget to mute yourself!
- If you have questions during the presentation please type them in the chat box! :)
- We will take more questions at the end.
- If you have a question regarding your student, please contact Ms. Burke or Mrs. Rubin through email.
- Questions related to Covid-19 can be emailed to Nurse Julia Manciangli or Dr. Forster.



# Subjects/Instructional Time

- Ms. Burke- ELA/Social Studies
- Mrs. Rubin - Math/Science



# Specials

- PE- Coach Smith, Mrs. Draughn
- Computers- Ms. Ball
- Music- Mrs. Oprandy
- Art- Mr. Daniel
- Venture- Mr. Jackson
- Media- Mrs. Mac/Mrs. Beason
- Counseling- Mrs. Walsh
- DARE/School Resource Officer- Officer Bryant



# Yarbrough School Counseling Program

## Kelly Walsh

### The role of a school counselor:

Foster the **educational, career, and social/emotional** development of students throughout their academic careers. Services are **brief and solution focused**.

### Services include the following:

- Bimonthly counseling lessons
- Individual and small group support.
- Responsive services and crisis management
- Referrals to community agencies as needed
- Collaboration and consultation with staff & parents

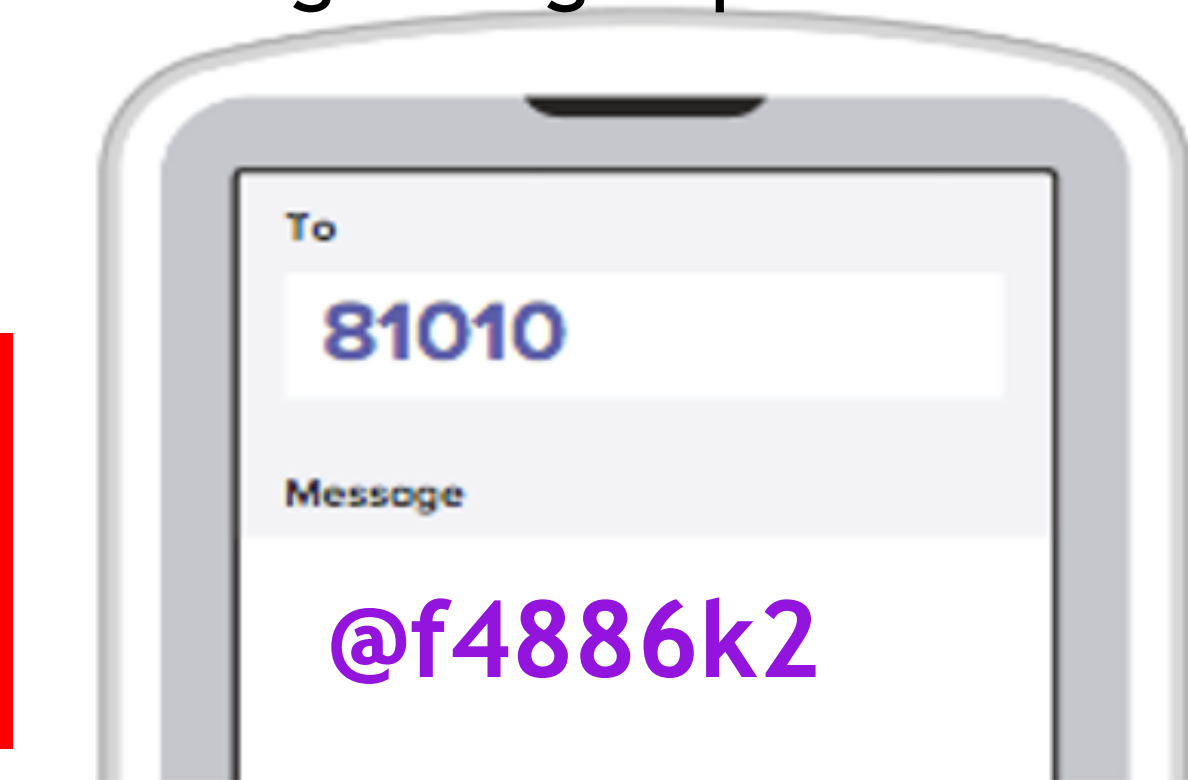
For more information please visit Mrs. Kelly Walsh's website or her at. [klwalsh@auburnschools.org](mailto:klwalsh@auburnschools.org)



# Stay Connected!

- Tuesday Folder- Team Newsletter
- Email- Monthly YES Newsletter, Important Announcements
- Facebook- YES Parents
- Remind Text Messages- Sign up NOW!

**Text  
Messages  
Reminders:**



# Student Accountability

## Students Accountability Checks

K - Keeping to self  
Talking

R - Rude/Disrespectful

D- Disruptive/

X - Off task behavior O - Other (see note)

TF- Tuesday Folder

HW - Homework missing or incomplete

NP - Not prepared for class

## Daily Consequences:



= sitting out 1/2 recess

= sitting out all of recess

= parents contacted

**\*Students earning more than 12 checks or being suspended in a 9 week period are ineligible for the End of 9 Week Celebration.**

# Student Accountability: Tuesday Folders

## Student Weekly Tuesday Folder

By signing below, you acknowledge reviewing all graded papers and earned accountability strikes.  
All folders are due, signed and returned with graded work inside, by Wednesday.

DATE	NUMBER of Grades	PARENT'S SIGNATURE	This Week's Accountability Strikes	Total Strikes for 9 Weeks
August 14, 2018	2	<i>[Signature]</i>	T/LB/CF (2)	2
August 21, 2018	5	<i>[Signature]</i>	F/JT (1)	3-1
August 28, 2018	9		(1)	2
September 4, 2018				

Top = Reason for check!

Bottom = Teacher holding child accountable!

**HELLO**  
I AM...  
**ACCOUNTABLE**



# Student Accountability

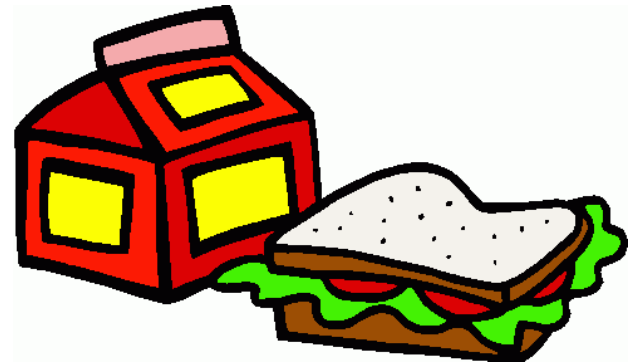
Students are given lots of positive encouragement in 5<sup>th</sup> grade!

- We give lots of verbal praise to students who are on task to encourage those who need to refocus.
- We encourage positive leadership habits and recognize student leaders.
- Students going 5 days without any accountability checks can have a behavior strike removed.
- You will notice smiley faces and words of encouragement on Tuesday Folders & graded work!
- Positivity Project coming in September. (Each week we will focus on a different character trait and we will be looking for these traits to be displayed throughout the school day.)



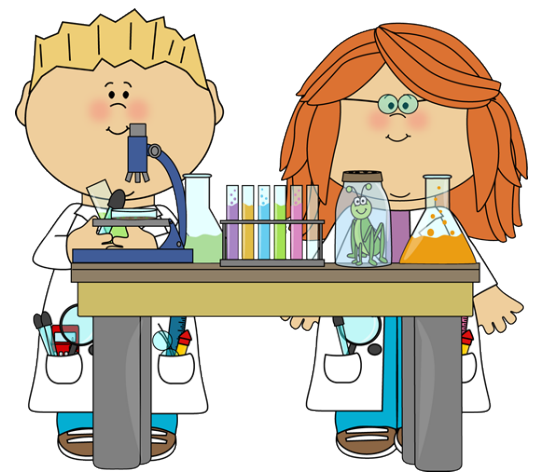
# Visitor Policy

- At this time, we are not allowed any visitors into classrooms.



# Science

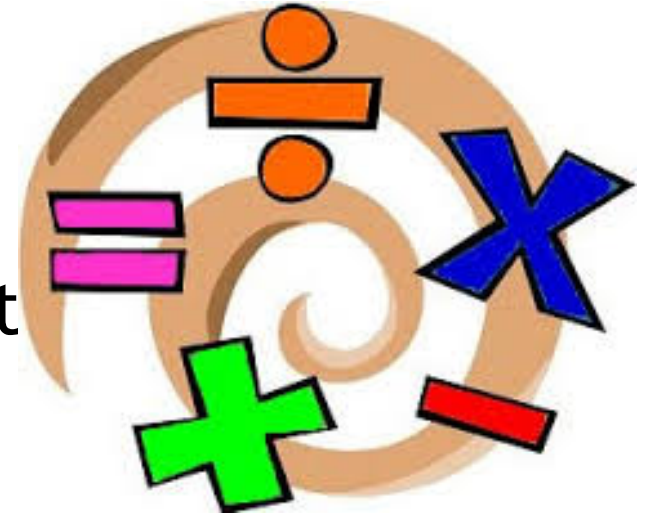
Mrs. Rubin



- Hands-on curriculum mixed with kits, textbook, notes, journaling, etc.
- Tests are always announced with study materials/Science Notebook notes provided
- Comprehensive Tests
- Notebook Checks
- C.E.R.

Classwork 10%  
Quizzes 40%  
Tests 50%

# MATH...Mrs. Rubin



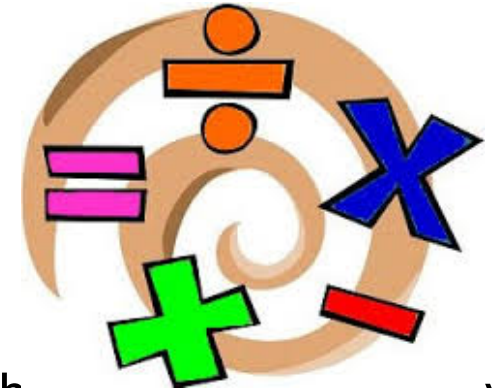
- **Math Curriculum**
  - Textbook Packet (Go Mat
  - Math Journals
  - Study Guide Folders
- **Skill Videos**
  - [Yarbrough Elementary School Website](#)
- **Quizzes** (1 or 2 per week) (40%)
  - Announced to students & written in planners
- **End of Unit Tests** (50%)
  - Study Guides 3-4 days prior to test
  - Test Corrections day after test

- **Standardized Tests**

- STAR Test- Progress monitoring tool
- Critical Standards Test
- ACAP- Alabama's standardized spring test

- **Homework (10%)**

- ADD Sheets (Passed out on Thursdays & due the following Thursday)
- May turn in early on Friday, Monday, and Tuesday for early grading and help!
- All 100's get to put their name in a drawing for a Coke! (Donations needed!!!!)



## **My goals for your child this year in math:**

- 1.) Confidence built
- 2.) Accuracy (without careless mistakes)
- 3.) Think about reasonableness
- 4.) Independent learners

# **SOCIAL STUDIES**

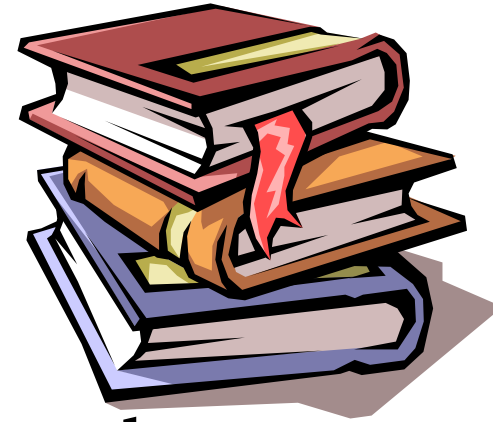
**Ms. Burke**



- **Social Studies/US History provides a great platform for reading and writing instruction using *informational text*.**
- **We will use ppts, inquiry projects, primary source documents, and even a historical fiction novel to help us understand the events that built our nation. Your student will use iPads to research important activists and events.**
- **We begin with Geography & Indigenous Americans and we will end with the Civil War and Reconstruction.**
- **Students will earn classwork, test and project grades.**
- **Tests - 50%, Quizzes/ Projects - 40%, Classwork - 10%.**

# ELA

Ms. Burke



## Taught through varied approach

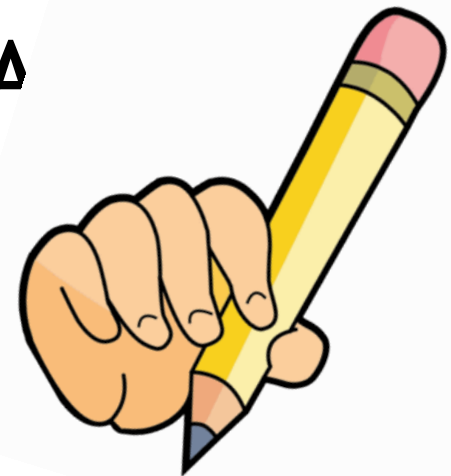
- Novels and a variety of other texts
- Newbery Exploration
- Grammar Skills
- Five paragraph essays
- Reading stamina & comprehension practice
- Daily Language Arts Review (DLR)/Flocabulary or Spelling Quiz every other Tuesday
  - 5 vocabulary words per DLR quiz
  - Missing punctuation & capitalization will count for -0.5 pts each

# ELA Continued...

## Grading

- Tests/Projects - 50%
- Quizzes - 40%
- Class work/ Homework - 10%

**PLEASE HAVE YOUR CHILD READ  
20-30 MINUTES NIGHTLY**





# **YES Traditional Learning Parent Questions**

# If we were to decide to go to Remote Learning, how would that work?

- Parents may change from Traditional Learning to Remote Learning at any time.
- Parents may only change from Remote Learning to Traditional Learning at the end of the first semester.
- If you would like to change to Remote Learning, contact Dr. Forster or Dr. Baugh. They will have you complete a registration document and your student will be placed in a Remote Learning classroom the next day.

What will happen if a student, or an entire class, goes into quarantine?

- Students who are in quarantine can complete all of their assignments through Schoology, (all students have been trained on Schoology).
- Grade level teachers use Schoology to enter classroom assignments, monitor completed tasks and grade student work.
- If an entire class, (and the teacher) have to quarantine, the teacher will provide her class instruction through Web Ex and assign work through Schoology.

Will there always be so many students in the traditional learning classrooms?

- While it is advantageous to have smaller classroom sizes in order to social distance, our classroom ratios are currently within the acceptable range for 4<sup>th</sup> and 5<sup>th</sup> grades 27:1.
- At this time, there is not a plan to add additional teachers to our staff.

## Why can't students sing or play instruments during music?

- At the current time, we feel that it is best if students do not sing or play instruments due to the increased particles in the air when these things occur.
- We would like to limit the sharing of musical equipment between classes in order to limit possible contact exposure.
- We are hopeful that we can soon make changes to this practice because we all want to hear our children sing and gain experience with musical instruments.

## What is the procedure if a child is potentially COVID positive?

- If a student is potentially COVID positive, that student is taken to the office, parents are called and asked to pick up the student. Parents are given additional instructions on what documentation is needed before the student may return.
- If the student tests positive for COVID, the students that sit within 6 feet of the positive student must quarantine for 14 days.

## Can a rapid test be required to cut down on wait time?

- The specific type of COVID test given by each doctors office is not specified in our return to school policy - only the note stating that there was a test conducted.

In the event we have to move to Remote Learning, will my child keep their same teacher?

- No, Remote Learning Teachers work only with those students who are at home and Traditional Learning Teachers work only with students in the building.
- If an entire classroom, grade level or school has to quarantine then each homeroom would keep the same teacher.



# Wish List!

We will let you know when we are low on these things. This helps our classroom stay free of germs!

- Disinfectant Wipes
- Hand Sanitizer
- Kleenex
- Lysol Spray
- Band-aids
- Ziplock baggies

